

FAIRBURN SCHOOL NEWSLETTER



NEWSLETTER NUMBER 5 - 2022

Term 2, Week 6

Wednesday 8th June 2022

Kia ora, Malo e Lelei, Talofa Lava, Kia Orana, Ni sa bula, Mauri, Suosday, Sat Sri Akaal, Tajba Filghodu, Xin Chao, Ni Hao, Guten Tag, Sawadee, Kumusta, Fakaalofa lahi atu, Maith, warm greetings to you all.

THE IMPORTANCE OF ATTENDANCE

We would like to take this opportunity to remind families the importance of attendance even on rainy days! Also a reminder of our school day.

8.55am - 10.40am School in session

10.40am - 11.00am Interval

11.00am - 12.30pm School in session

12.30pm - 1.20pm Lunchtime (eating time 1.10pm)

1.20pm - 2.50pm School in session

If your child is unable to attend for the day PLEASE let the school office know. You can contact us by phone 2701130 or can report absence online on our website.

COVID UPDATE

Please remember to let the office know if your child or anyone in their household has tested positive.

In the meantime we will continue to encourage mask wearing at school and will review this later in the term. Please rest assured we continuously keep high levels of hygiene protocols around the school to avoid transmission. Please test children if they seem unwell, there are RAT tests available from school should your family need some.

MATARIKI & TEACHER ONLY DAY

The first public holiday to celebrate Matariki will be this year on Friday 24 June 2022 and therefore school will be closed.

We will also have a **TEACHER ONLY DAY** on Monday 27 June so school will be closed. We appreciate your support with this.

FREE FURNITURE

We have had a bit of a clear out and have lots of furniture that the school no longer needs. Please come along on Thursday 16th June at 2pm to behind the school hall (Petrie Place gate) and help yourself. Must take 'as is'.

* Weather permitting *

PRESCHOOL VISITS

If you have a child who is going to turn 5 soon, call Miss Pritchard to organise dates for preschool visits.

A parent or whanau member (over 18 years old), must stay for the entire preschool visit. Bring along some morning tea for you and your child.

Our preschool visits for Term 2 are:

Friday 10th June - 9am-11am

Friday 17th June - 9am-11am

Friday 1st July - 9am-11am

Nga Mihi

Paula Passfield

Principal

PRINCIPAL AWARDS



Congratulations to the following children:

TJ Pusi-Faafetai, Xylas Toi, Leon Lupo, Semisi Vea, Amirah Lin, Anna-Maria Sao, Losalio Havili, Ansh Anand, Adriel Kumar, Laura Pritchard, Nik Prasad, Autumn Le-Noel, Mele Kava, Paula Matu, Vinayak Pansaiya, Azaan Nazim, Rynav Kumar, Sophronia Pole, Tyron Iehu-Moetara, Pretoria Viane Papalii, Jemarna Sykes, Apihema Pofele, William Breen, Ahanna Chetty, Daniel Latu, Atamana Latu and Patrick Ah Sue.

CALLING ŌTĀHUHU COMMUNITY



Take what you need, leave what you can

We need your help to keep our Pataka stocked for the local community

Head along to ATWC at 671 Great South Road, Otahuhu. You will see Hine's Pataka next to the driveway which is stocked regularly. Please take what you need, and leave what you can.

DATES FOR THE DIARY

FRIDAY 17TH JUNE

INTERSCHOOL HOCKEY

THURSDAY 23RD JUNE

MATARIKI CELEBRATION

FRIDAY 24TH JUNE

MATARIKI -SCHOOL CLOSED

MONDAY 27TH JUNE

TEACHER ONLY DAY

SCHOOL CLOSED

WEDNESDAY 6TH JULY

INQUIRY & DISCOVERY OPEN DAY FOR PARENTS & WHANAU

FRIDAY 8TH JULY

LAST DAY OF TERM 2

TERM DATES 2022

Term 2

2nd May - 8th Jul

Term 3

25th Jul - 30th Sep

Term 4



17th Oct-15th Dec

REMINDER

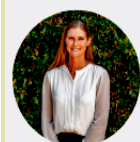
IF YOUR CHILD IS FEELING UNWELL PLEASE KEEP THEM HOME

living & selling locally Otahuhu

Ray White

Receive a \$2000 Prezzy Card* for Fairburn School Quote 'Fairburn School' with an appraisal request!

*gifted upon successful sale: friends & family can also participate.



Candace Williams
proudly sponsoring Fairburn School.

0226264913
candace.williams@raywhite.com

A.T. Realty Limited Licensed (REAA 2008)

COMMUNITY NOTICES:

Pedestrian Crossing Reminder:

- ◆ Use official crossings where possible – if you're within 20 metres of a pedestrian crossing, the law requires you to use it.
- ◆ Check that approaching drivers have seen you and can stop before you step out.
- ◆ Cross as quickly as you are able.
- ◆ For crossings with signals, wait for the monitors crossing sign sign and instructions on when to cross.

WARM CLOTHING DONATIONS Just a reminder that if you have any warm clothes you would like to donate we will happily take them! These are used as spares for children at school but are also given to families in need.